



# All-American Sign Co., Inc.

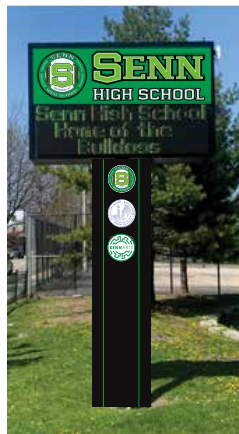
Design • Fabrication • Installation • Maintenance

**APPROVED CPS VENDOR**

**# 21799**

2026 BROCHURE

## ELECTRONIC MESSAGE CENTERS



## SIGN RECONDITIONING

LED, EMC, ZIP TRACK & POLE COVER UPGRADES



BEFORE

## EXTERIOR WALL SIGNS



DIMENSIONAL LETTERS & SIGNS



COLUMN SIGNS



OVERLAY PANELS



DIRECTIONAL SIGNS



## ZIP TRACKS & ACCESSORIES

NEW & REFURBISHED CABINETS



BEFORE



CHANGING POLES

ABCDEFGHIJKLMNOPQRSTUVWXYZ  
1234567890  
**BW 72**

4", 6" & 8" (H)  
LETTERS AVAILABLE  
IN RED OR BLACK

## EXTERIOR FENCE SIGNS



## MONUMENT SIGNS



**CALL FOR PRICING • \$100 ORDER MINIMUM PLUS DELIVERY • ALL ORDERS REQUIRE A P.O.# OR C.O.D.**



# All-American Sign Co., Inc.

Design • Fabrication • Installation • Maintenance

## APPROVED CPS VENDOR

# 21799

2026 BROCHURE

### SINTRA/ADA/BRILLE SIGNS

WALL OR FLAG MOUNT - CUSTOMIZABLE!



STANDARD: 3"-5"(H) x 9"-16"(W)

### FLAG SIGNS



AVAILABLE IN 7', 10' & 16'

### PARKING PLACARDS



### A-FRAMES & YARD SIGNS



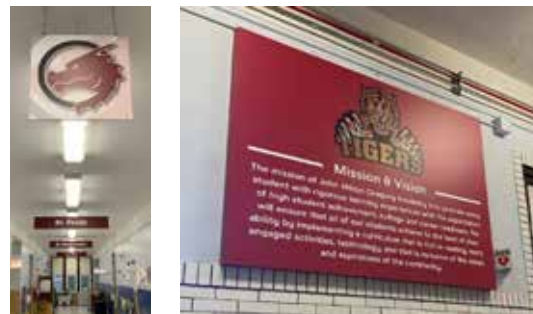
### DROP-OFF SIGNS

WITH OR WITHOUT U-CHANNEL POST

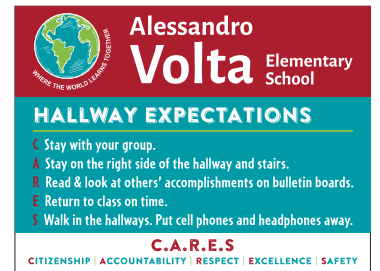


STANDARD SIZES: 18"-24"(H) x 12"-18"(W)

### INTERIOR SIGNS



### EXPECTATION SIGNS



INTERIOR / EXTERIOR BEHAVIOR BOARDS - CUSTOMIZABLE!

### BANNERS



POLE POCKET BANNERS



ROLL-UP BANNERS



STEP & REPEAT BANNERS

### CUSTOM VINYL GRAPHICS

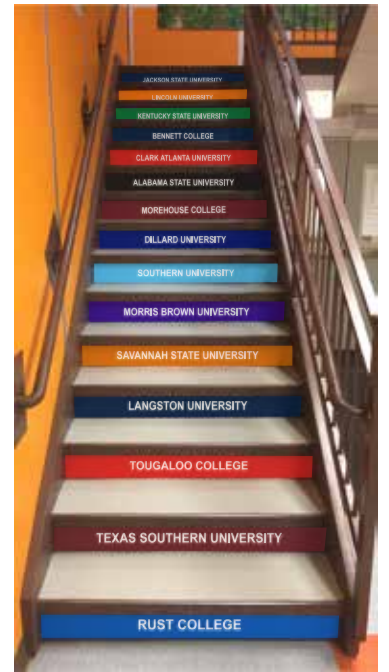


VINYL WRAPS & DECALS



FLOOR & WALL GRAPHICS

### STAIR RISER GRAPHICS



CUSTOMIZEABLE!

CALL FOR PRICING • \$100 ORDER MINIMUM PLUS DELIVERY • ALL ORDERS REQUIRE A P.O.# OR C.O.D.





# All-American Sign Co., Inc.

Design • Fabrication • Installation • Maintenance

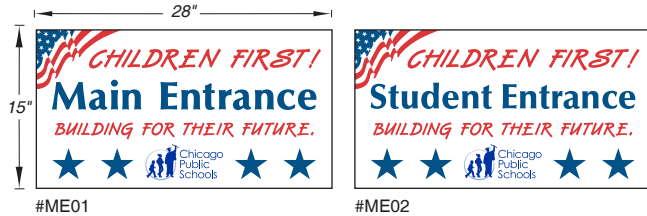
## APPROVED CPS VENDOR

# 21799

2026 BROCHURE

### ENTRANCE SIGNAGE

WALL, FENCE OR POST INSTALLATION



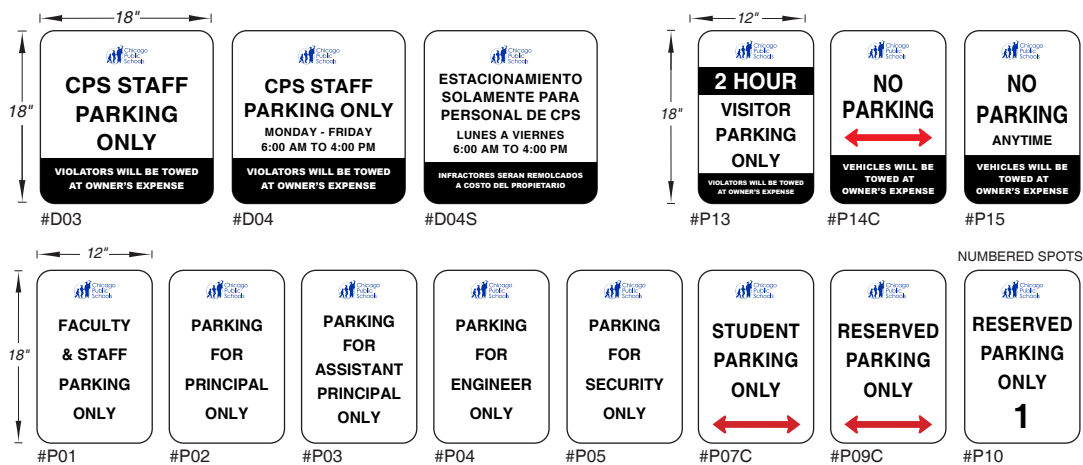
### DISCLAIMER SIGNS

WALL, FENCE OR POST INSTALLATION



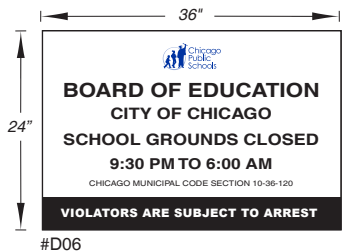
### PARKING SIGNS

WALL, FENCE OR POST INSTALLATION



### PLAYGROUND SIGN

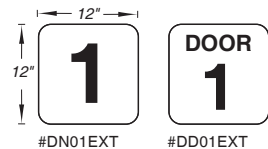
WALL, FENCE OR POST INSTALLATION



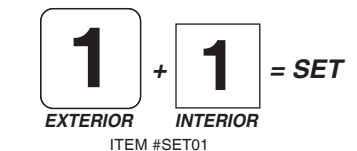
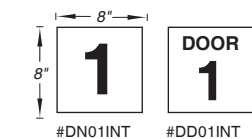
### DOOR SIGNS



EXTERIOR: 12" x 12" ALUM., WALL MOUNT



INTERIOR: 8" x 8" SINTRA, WALL MOUNT



\* COLOR OPTIONS AVAILABLE

### MISCELLANEOUS SIGNS

WALL, FENCE OR POST INSTALLATION



\* REFLECTIVE MATERIAL AVAILABLE FOR ADDITIONAL CHARGE - MOST SIGNS AVAILABLE IN SPANISH - PLEASE SPECIFY ARROW DIRECTIONS

QUANTITY PRICING AVAILABLE • \$100 ORDER MINIMUM PLUS DELIVERY • ADDITIONAL FEES MAY APPLY ON CUSTOM SIGNS